

Part 4

GARDEN TOURS CREATURES AND CRITTERS

MASTER GARDENER VOLUNTEERS OF THE ST
CROIX VALLEY AND POLK COUNTY, WISCONSIN

AUGUST 27, 2020

A photograph of a squirrel with brown and grey fur and a bushy red-orange tail, perched on the edge of a dark metal garden bench. The squirrel is looking towards the camera with its mouth slightly open. The background is a lush green garden with various plants and two tall, white, spiky flower stalks on the right side.

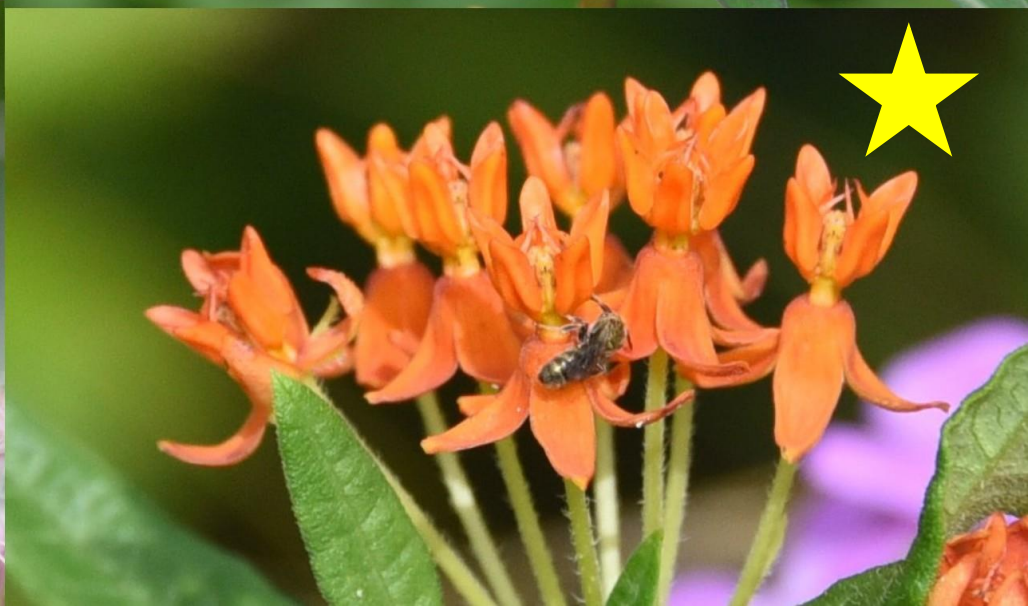
Critters in my garden

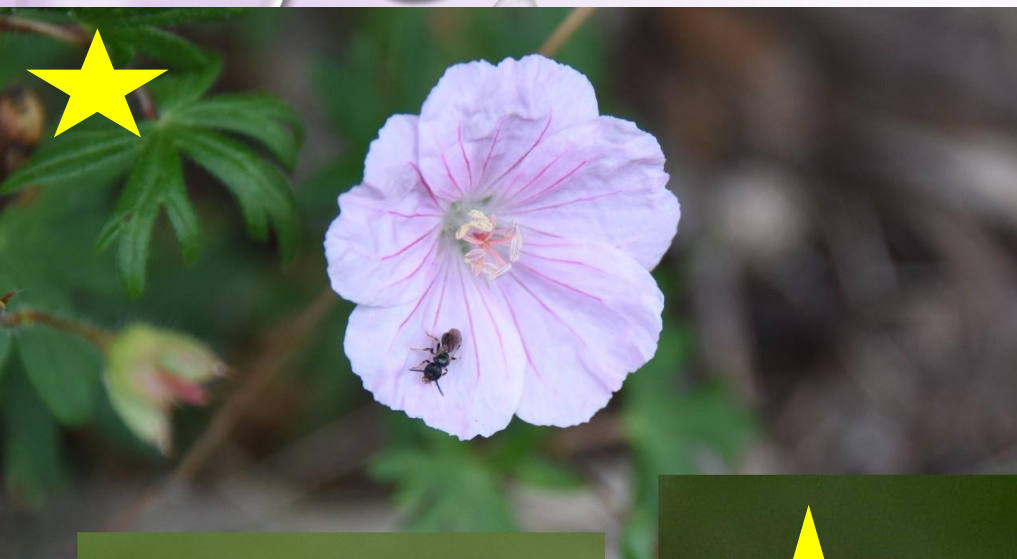
Margaret Smith, Town of Kinnickinnic

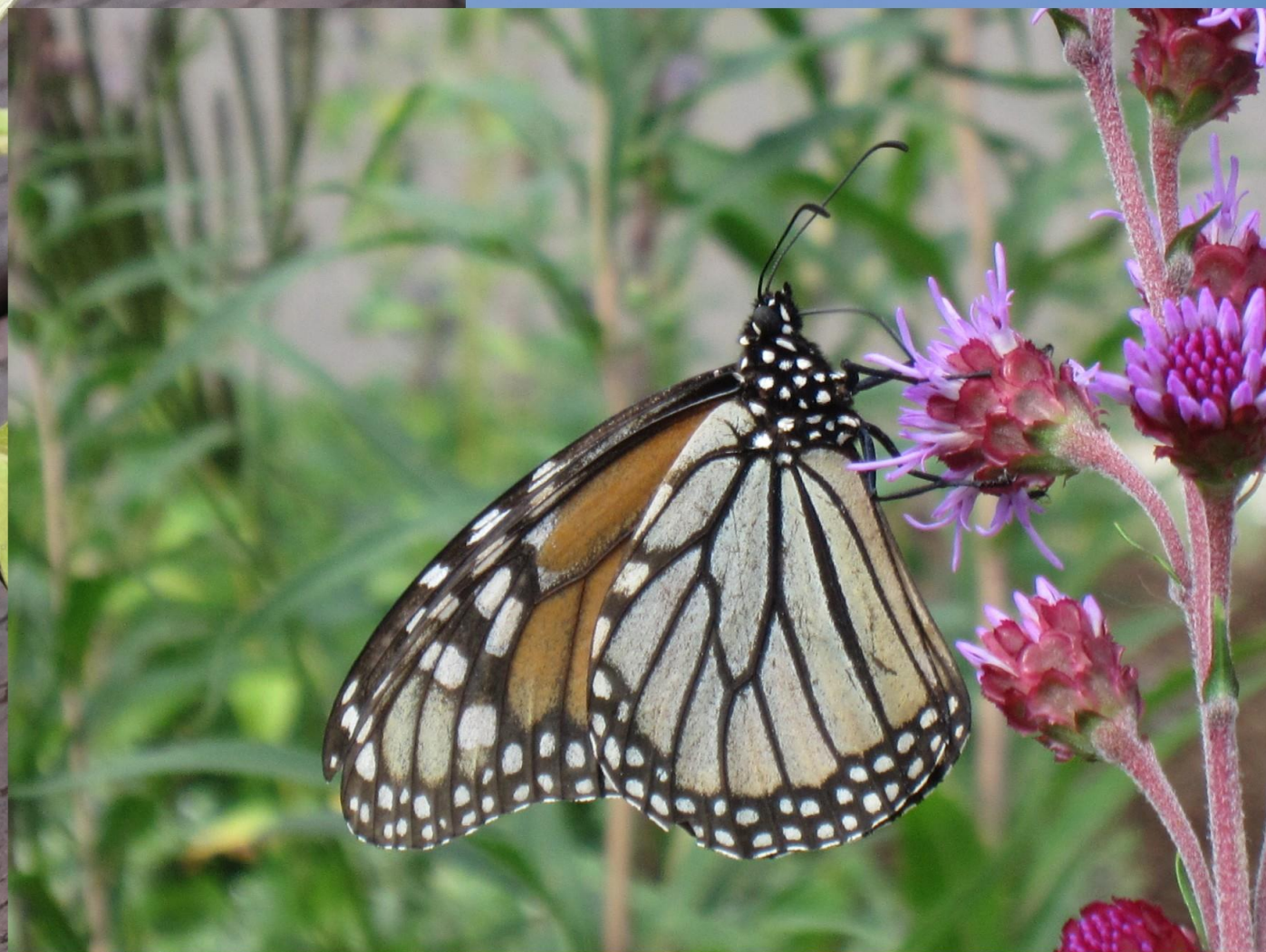
**“Whatever we do to the environment,
we do to ourselves.”**

~ David Suzuki

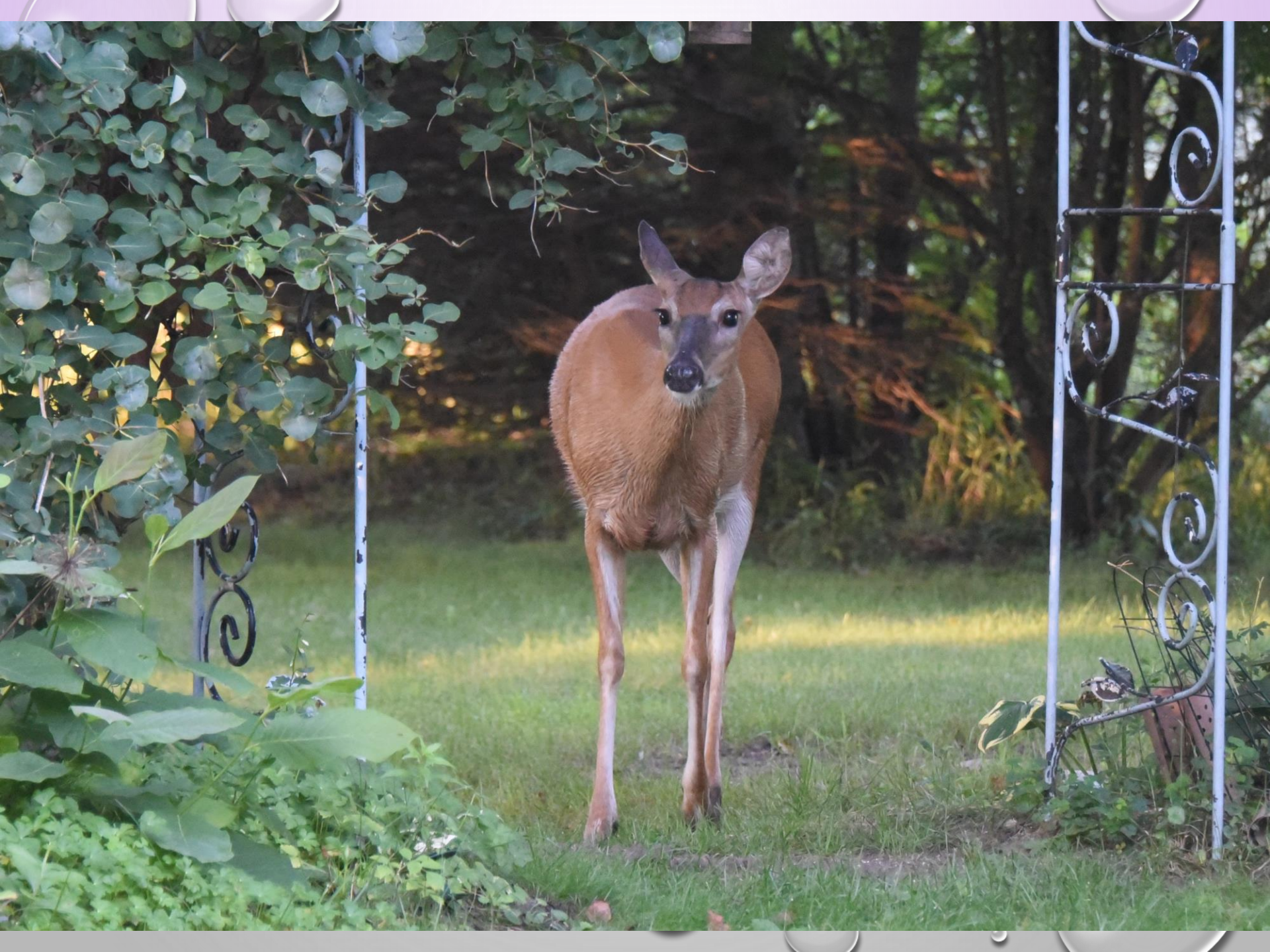














Sept. 2019:

**North American bird
populations have declined
by nearly 3 billion birds
since 1970.**

**That's a loss of nearly one in
four birds.**



suet feeders
(2)

window
reflection

sunflower chips (3)

grape jelly feeders
(4)

peanut feeders (4)

hummingbird feeder

bird bath

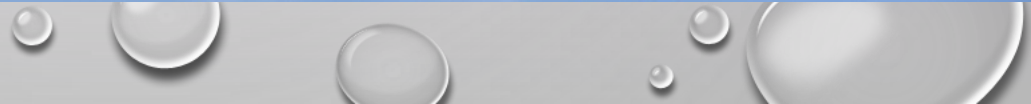
groundfeeders



Year round:
Peanut Feeders
Sunflower Chips
Suet
Water

May-August:
Grape Jelly Feeders

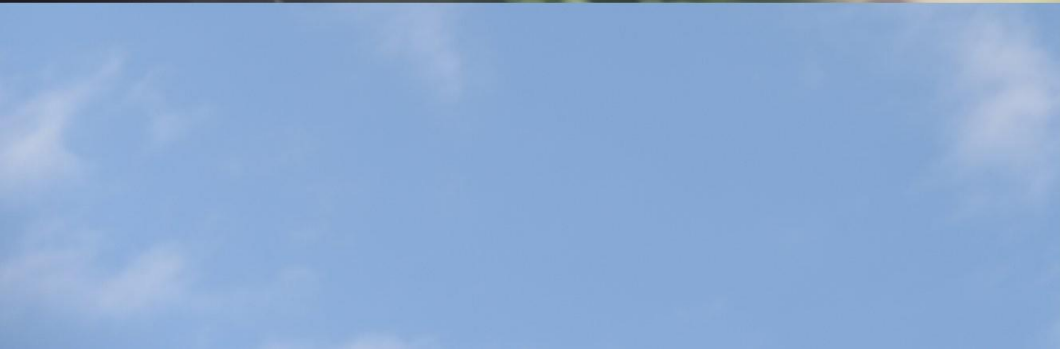
May-September
Hummingbird Feeders





Grape jelly

**Orioles
Hummingbirds
Catbirds
Finches
Bees
Yellow jackets
Red squirrels
Woodpeckers**







suet

**peanut
feeder**

**Peanut Pieces*
and raw suet
year round**

Lots of animals including

Woodpeckers- all kinds

Blue Jays

Chickadees

Nuthatches

Starlings

Some finches

Red Squirrels

etc

*** Available at Houles Feed Store in Stillwater/
Hwy 36**



**Medium sunflower
chips*
(do not germinate)**

**Finches
Goldfinches
Grossbeaks
Indigo bunting
Painted bunting
Sparrows
Chickadees
Nuthatches
Woodpeckers-rare**

*** Available at Houles Feed
Store in Stillwater/Hwy 36**



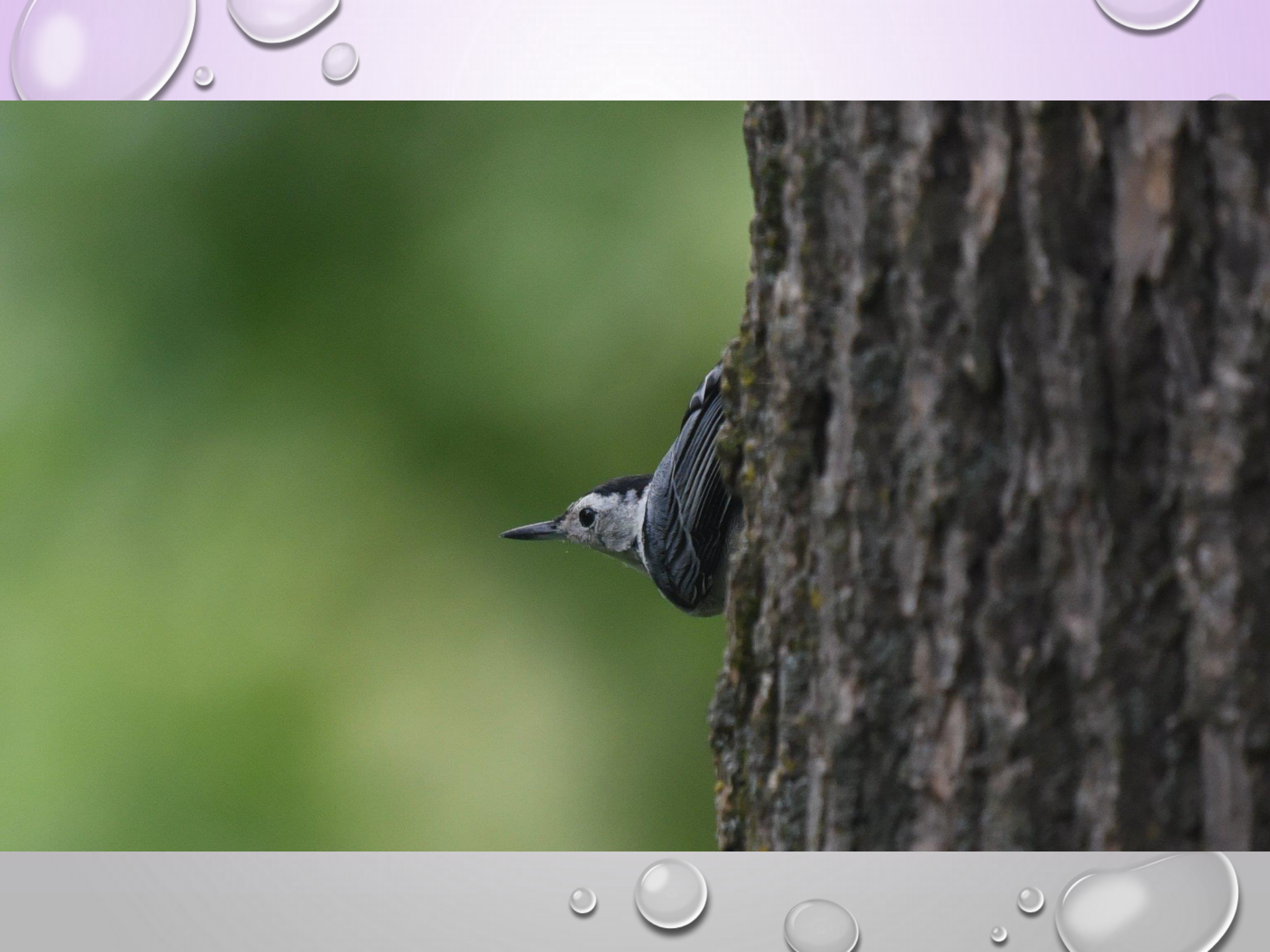






Groundfeeders



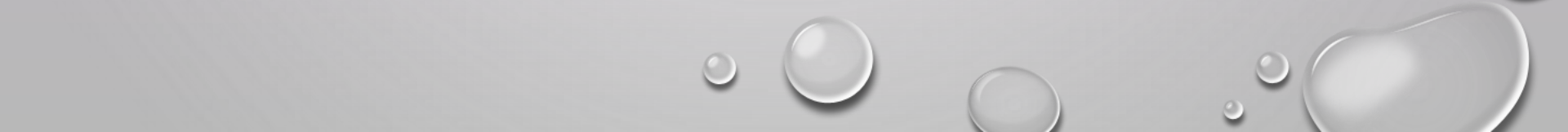


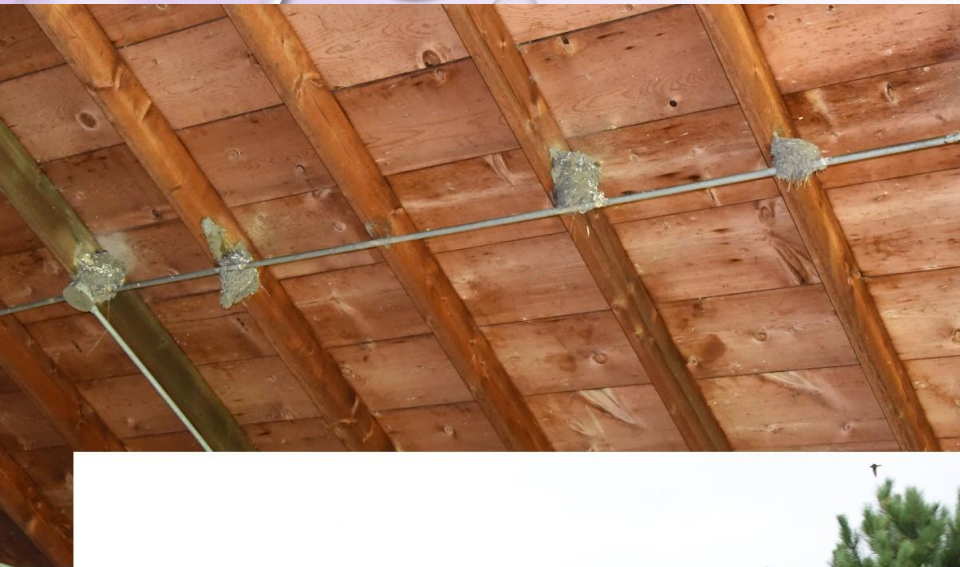


“Birds are indicators of the environment. When they are in trouble, we know we’ll soon be in trouble.”

~Roger Tory Peterson













Water is essential





Water is essential



Water is essential



Water is essential




Water is essential



Water is essential



Water is essential

A close-up photograph of a brass bristle brush with a light-colored handle, being used to clean a shallow, light-colored ceramic bird bath. The brush head is dark and appears to be covered in grime or algae. The bird bath is filled with water, and the background shows green foliage. The image is framed by a decorative border with water droplets at the top and bottom.

**brass bristle
brush**

**Keep it clean
to keep birds
safe**

**Am I
welcome in
your
garden?**



Year round critters!













**“When we become aware of life’s beauty, that’s
when we are most alive.**

~Constance Wu

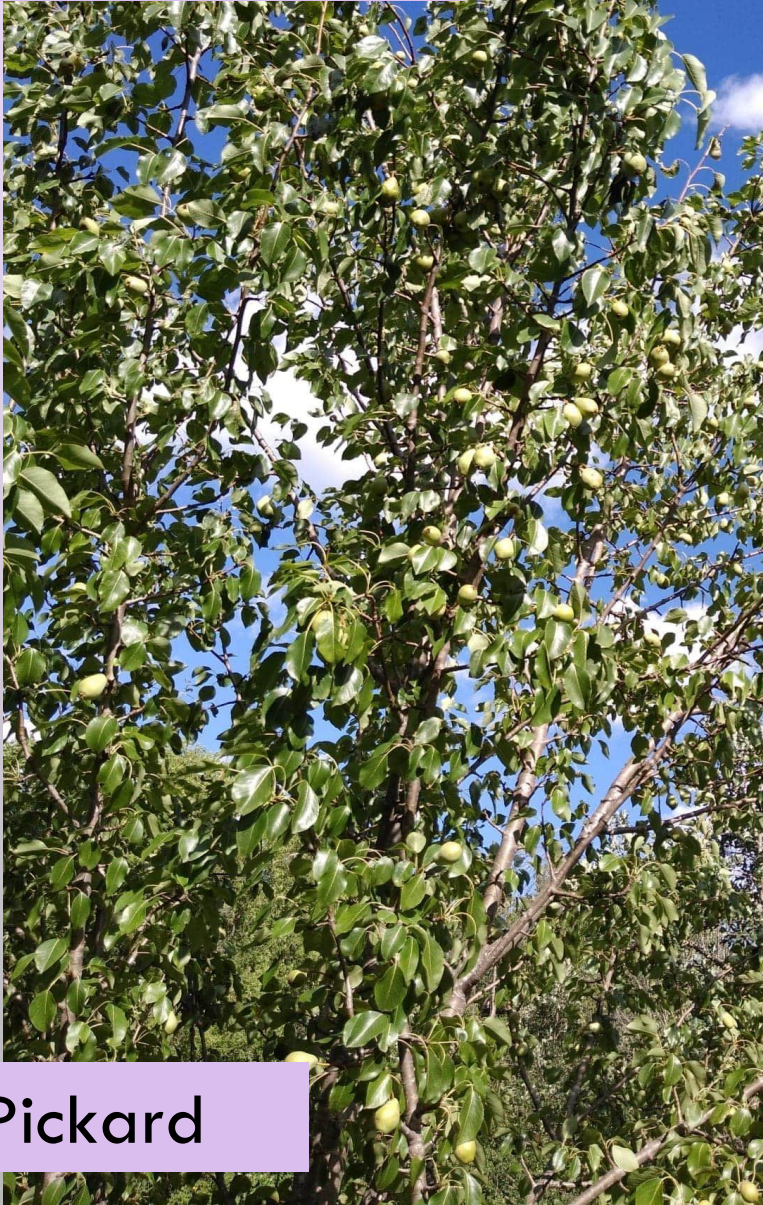


PRETTIES!



Sally Pickard

PEAR TREE



Sally Pickard

ROBINS



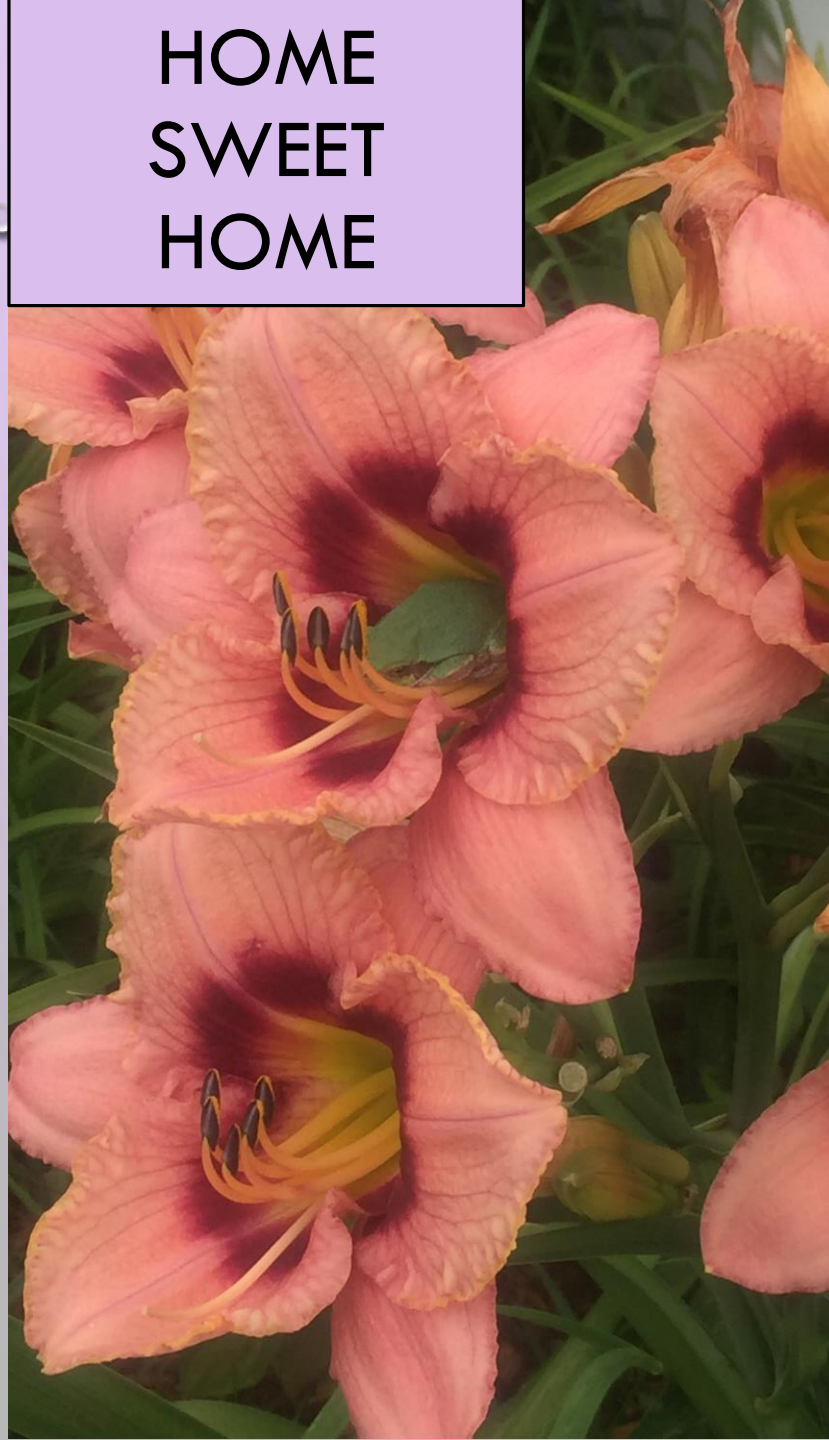
Sally Pickard

GARDEN DESTRUCTORS!



Karalyn Littlefield

HOME
SWEET
HOME



Karalyn Littlefield



REMEMBER OUR
WINTER GARDEN
FRIENDS.

Karalyn Littlefield

FAVORITE CRITTER SIGNS

